



PetraDiamonds

Corporate Presentation

February 2017

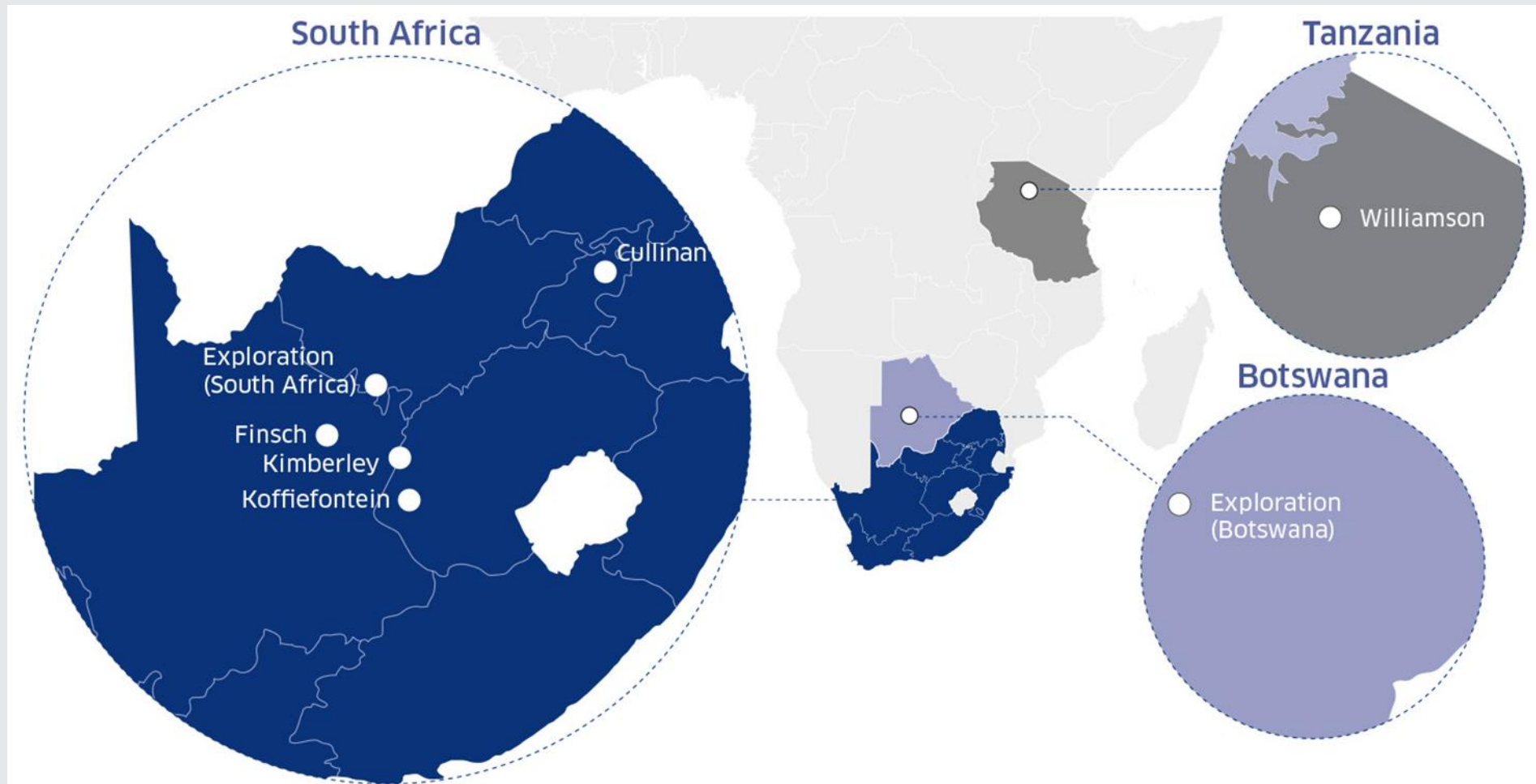
Driving Forward



Important Notice

- These Presentation Materials are being supplied to you by Petra Diamonds Limited (the “Company”) solely for your information and use at this presentation. These Presentation Materials may contain information that is confidential, legally privileged or otherwise protected by law. These Presentation Materials may not be reproduced in any form, redistributed or passed on, directly or indirectly, to any person or published, in whole or in part, by any medium or for any purpose. Failure to comply with this restriction may constitute a violation of applicable securities law.
- These Presentation Materials are exclusively for the purposes of raising awareness about the Company. These Presentation Materials are not intended to solicit the dealing in securities or securities financing nor do they form part of any invitation, offer for sale or subscription or any solicitation for any offer to buy or subscribe for any securities in the Company (“Company Securities”) nor shall they or any part of them form the basis of, or be relied upon in connection therewith or act as any inducement to enter into, any contract or commitment with respect to Company Securities.
- These Presentation Materials must not be used or relied upon for the purpose of making any investment decision or engaging in an investment activity. Accordingly, neither the Company nor any of its subsidiary undertakings (as defined in the Bermuda Companies Act 2006) (together, the “Group”), nor any of their respective directors, employees, agents or advisors makes any representation or warranty in respect of the contents of the Presentation Materials or otherwise in relation to the Group or any of its businesses.
- The information contained in the Presentation Materials is subject to amendment, revision and updating, and such information may change materially. No person is under any obligation to update, or keep current, the information contained in these Presentation Materials, and any opinions expressed in relation thereto are subject to change without notice. The Presentation Materials contain forward-looking statements which involve risk and uncertainties and actual results and developments may differ materially from those expressed or implied by these statements depending on a variety of factors. The Presentation Materials have not been independently verified and no representation or warranty, express or implied, is made as to the fairness, accuracy or completeness of the information or opinions contained herein. The forward-looking information contained in these Presentation Materials is expressly qualified by this cautionary statement.
- The delivery of these Presentation Materials shall not at any time or in any circumstance create any implication that there has been no adverse change, or any event reasonably likely to involve any adverse change, in the condition (financial or otherwise) of the Company or any other member of the Group since the date of these Presentation Materials.
- Any securities mentioned herein have not been and will not be registered under the United States Securities Act of 1933, as amended (the “Securities Act”) or under the securities laws of any state or other jurisdiction of the United States and may not be offered, sold, resold or delivered, directly or indirectly, in or into the United States absent registration except pursuant to an exemption from, or in a transaction not subject to, the registration requirements of the Securities Act and applicable states securities laws. The distribution of these Presentation Materials in other jurisdictions may also be restricted by law, and persons into whose possession these materials come should inform themselves about, and observe, any such restrictions. No public offering of securities is being made in the United States or any other jurisdiction.
- By attending this presentation or by accepting a copy of the Presentation Materials, you agree to be bound by the foregoing limitations and conditions.

Focus on Africa



- Five producing mines (four in South Africa and one in Tanzania), plus exploration in Botswana and South Africa
- Diversified portfolio is key to managing production risk across the Group

Discover Petra...

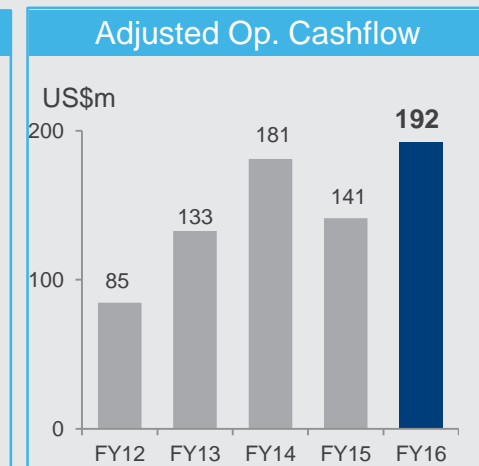
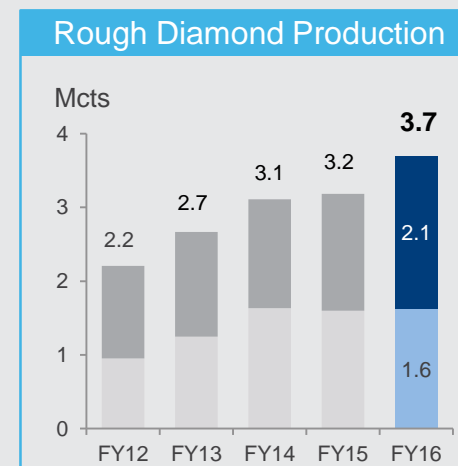
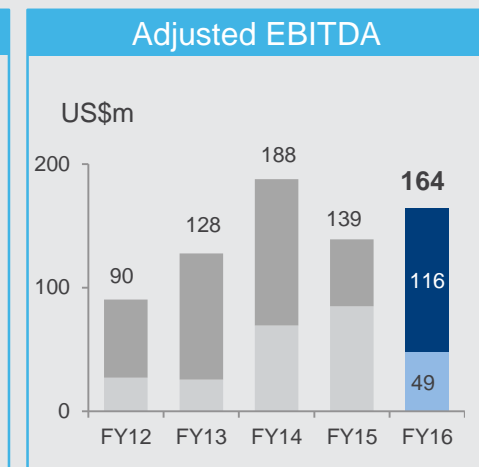
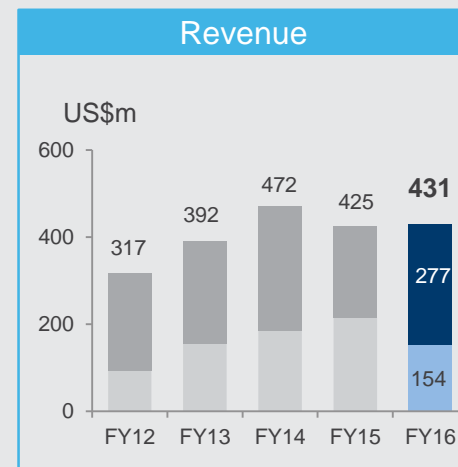
...a leading independent diamond miner with a diversified portfolio and high quality team

Petra expansion plans expected to:

- Improve grades
- Improve product mix
- Improve operating costs

Leading to:

- Significantly higher operating margins
- Production growth to ca. 5.3 Mcts by FY 2019

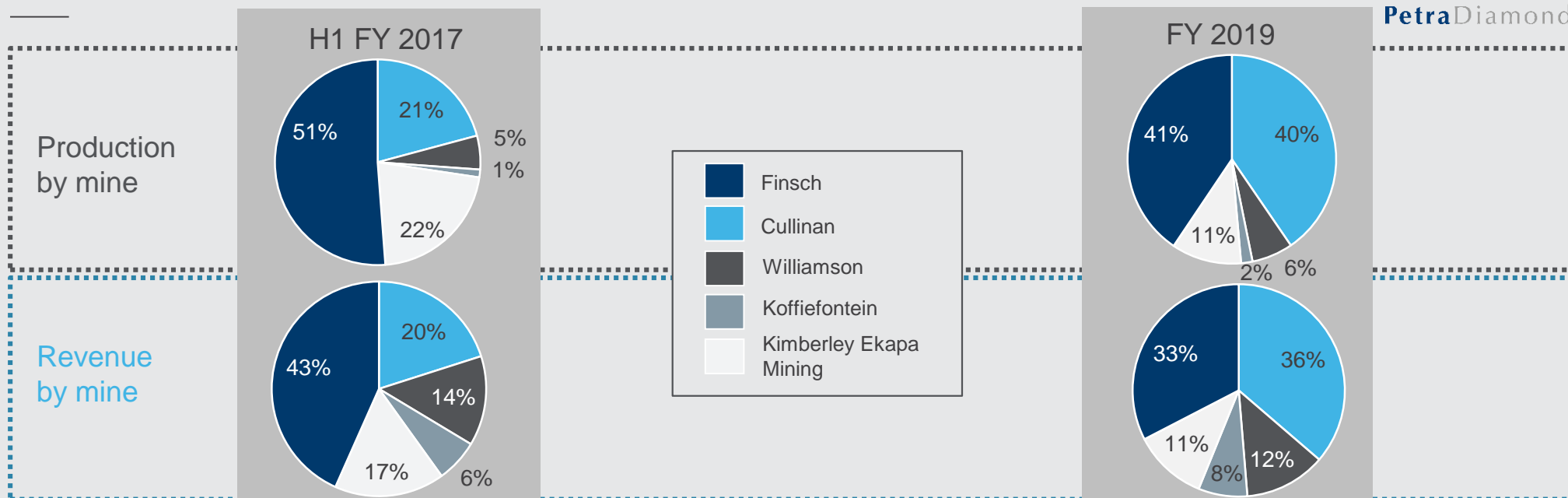


LSE: PDL; market capitalisation of ca. £810m / US\$1,000m (as at 1 February 2017)

H1 FY 2017 – driving forward to FY 2019



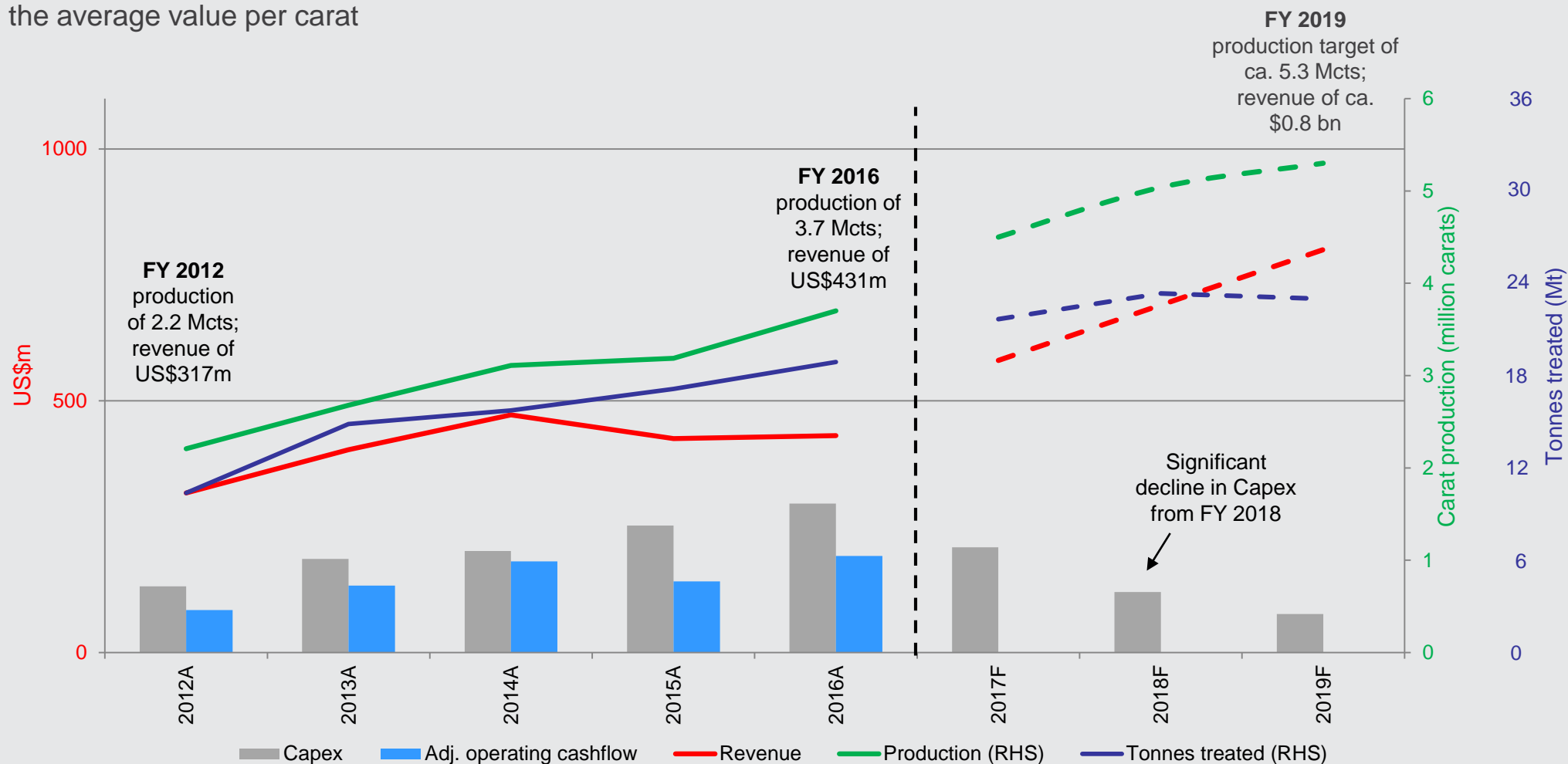
PetraDiamonds



	Unit	H1 FY 2017	H1 FY 2016	Variance	FY 2016 ¹
SALES					
Revenue	US\$m	228.5	154.0	+48%	430.9
Diamonds sold	Carats	1,910,113	1,303,051	+47%	3,448,084
PRODUCTION					
Total tonnes treated	Mt	9.9	7.7	+29%	19.0
ROM diamonds	Carats	1,331,615	1,243,706	+7%	2,582,135
Tailings & other ¹ diamonds	Carats	683,472	385,697	+77%	1,119,270
Total diamonds	Carats	2,015,087	1,629,403	+24%	3,701,405
CAPEX					
Total Capex	US\$m	157.2	151.3	+4%	322.3

Growth and Margin Expansion

Petra to maintain a fairly flat tonnage profile from FY 2017 onwards, but the replacement of poor quality tonnes with better quality tonnes will significantly grow production and increase the average value per carat

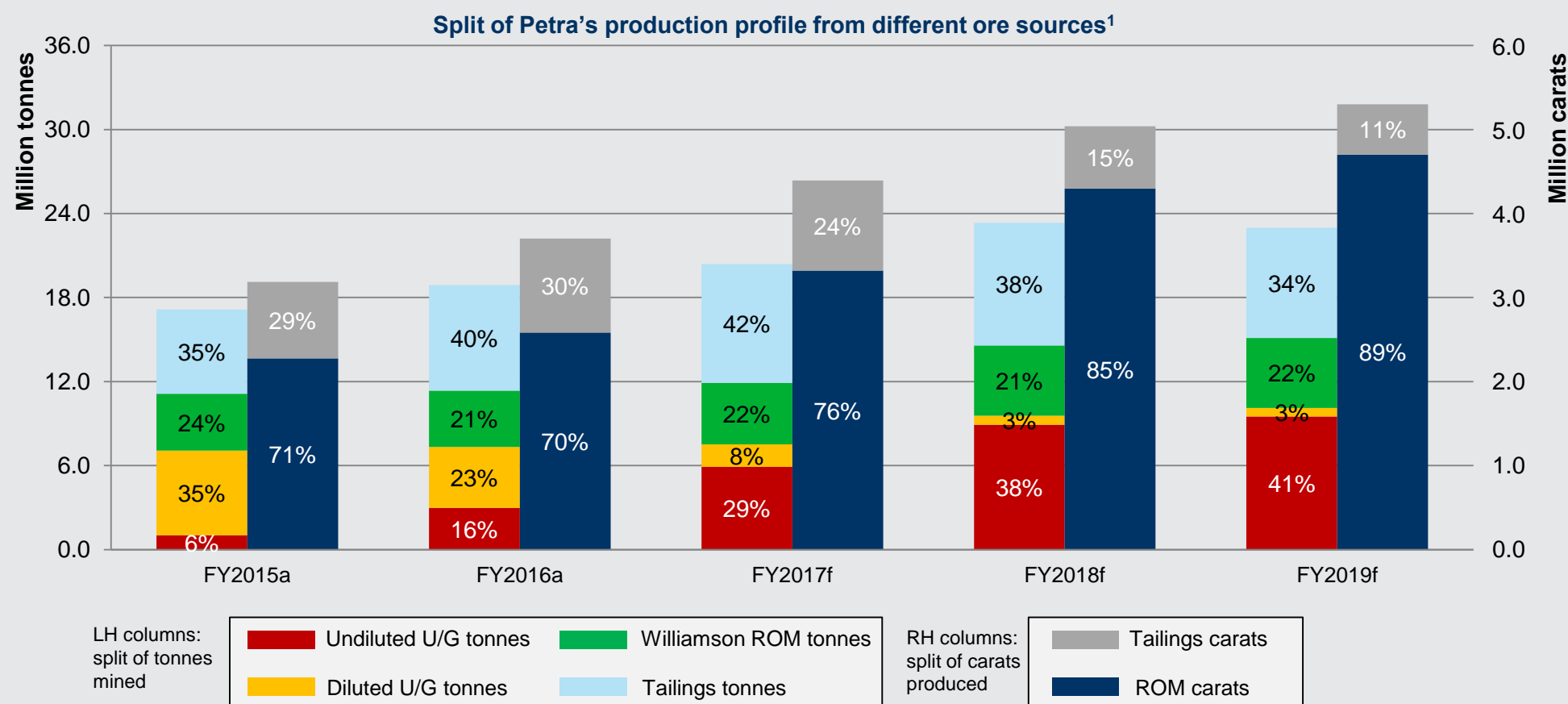


1. All forecasts for Capex, revenue and production are management estimates. Capex is in nominal terms; diamond prices are calculated using a 4% pa real price increase
2. Capex, production, adj. operating cashflow and revenue relating to KEM JV stated at 75.9% Petra attributable terms

Growth and Margin Expansion

Adjusted EBITDA margin expected to rise from ca. 38% in FY 2016 to +50% by FY 2019

- Increase in ROM grades and increase in tonnage throughput (mainly due to Kimberley Mines transaction) to lead to ca. 43% growth in production
- Lower value tailings carat production to reduce from 30% in FY 2016 to 11% of carat production by FY 2019



1. Production relating to KEM JV stated at 75.9% Petra attributable terms

Financial Position

	Unit	31 Dec 2016	30 June 2016	31 Dec 2015
<i>Closing exchange rate used for conversion</i>		<i>R13.73:US\$1</i>	<i>R14.68:US\$1</i>	<i>R15.46/US\$1</i>
Cash at bank	US\$m	47.2	48.7	42.1
US\$ loan notes (including accrued interest)	US\$m	302.1	302.0	302.1
Bank loans and borrowings	US\$m	210.5	131.5	63.9
Net debt	US\$m	465.4	384.8	323.9
Bank facilities undrawn and available	US\$m	57.1	110.0	177.1
Diamond inventories	Carats	673,031	549,620	666,357
	US\$m	50.8	43.6	57.4
Diamond debtors	US\$m	1.9	63.4	1.4

- Effective 1 July 2016, revisions agreed to the covenant measurements related to the Senior Secured Lender Debt Facilities – [see slide 37](#)
- Company projected to become initially free cash flow positive in FY 2017, as expansion programmes at Finsch and Cullinan continue the production ramp-up of undiluted mining areas

Diamond Market – Overview

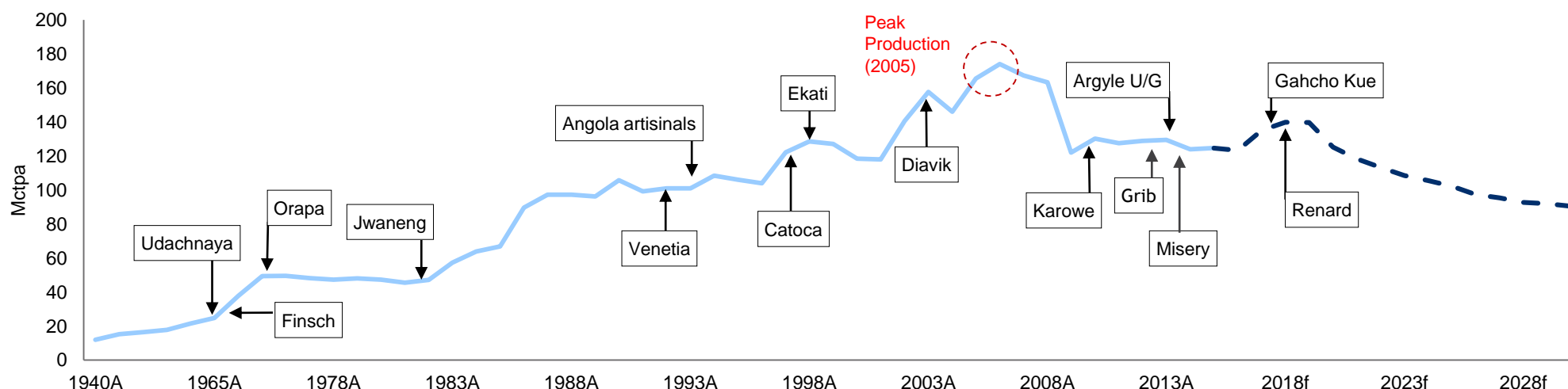
Supply

- **Supply constraints:** Global rough diamond production rose 2% to 127 Mcts worth \$13.9bn in 2015 (average \$109/ct)
- **No new finds:** success rate in diamond exploration estimated to be <1% - no significant finds this century, plus exploration expenditure cut worldwide
- **Overall declining trend:** 2005 expected to have been world peak diamond production
- New mines coming on stream in 2016/2017 not large enough to counter declines from world's major producers
- World supply expected to decline slowly after 2020

Demand

- **US recovery:** economy continues to improve; very strong diamond buying culture (ca. 45% of world demand); retail demand currently performing well
- **“Late cycle” commodity:** growth in developed and emerging markets to continue further to rising wealth and growing middle classes worldwide
- **Bridal underpin:** The bridal sector provides a certain level of immunity to fluctuating economic conditions; desire for diamond bridal jewellery increasingly taking hold in emerging markets
- **Mass luxury:** China / India starting to follow US model of affordable diamond jewellery (US\$200 to + US\$2,000)

Global Diamond Supply: Historical & Forecast Rough Production

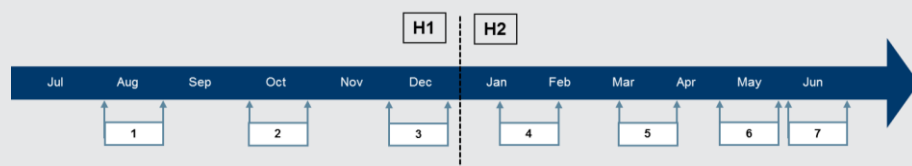


Diamond Market – Overview

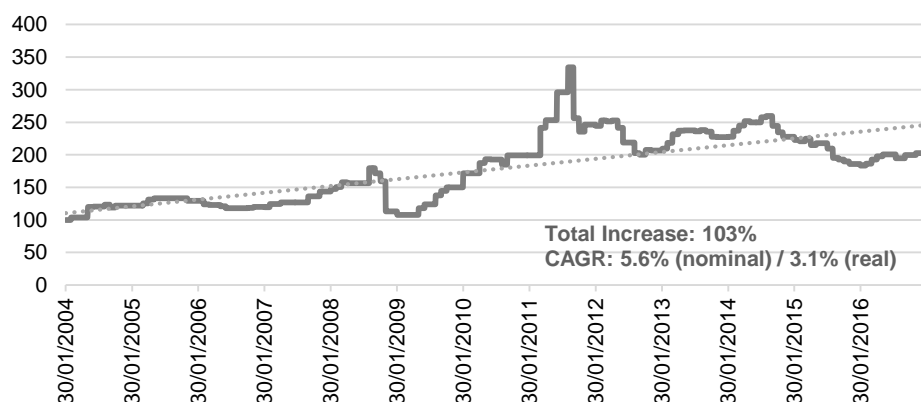
FY 2016 Market

- Petra pricing down ca. 6% for Year
- H1: Market experienced challenging conditions in H1 2016 – Petra pricing down ca. 9%
- H2: Market stabilised in early calendar 2016, with good sales demand from the midstream of the diamond pipeline – Petra pricing up ca. 3%

Petra Sales Timing – FY 2017



Rough Diamond Index (Jan 2004 to Dec 2016)



FY 2017 Outlook

- Market conditions will depend on continued supply discipline from the major producers, as well as a stable retail market, particularly in the US
- DPA commenced first marketing campaign in US in October – “Real is Rare – Real is a Diamond”
- Petra conservatively guiding for flat diamond pricing for FY 2017, but improved product mix expected for Finsch, Cullinan and Koffiefontein (less tailings contribution and ever-increasing volumes of ore from undiluted areas)
- H1 FY 2017 saw steady market conditions, with pricing on a like for like basis generally on par with H2 FY 2016

Petra – Rough Diamond Prices (US\$/ct)

	Actual ¹ Weighted Average US\$/ct H1 FY 2017	Guidance ² Weighted Average US\$/ct FY 2017	Actual Weighted Average US\$/ct FY 2016
Finsch	98	100-105	89
Cullinan	127 ³	105-115	126 ³
Koffiefontein	495	520-550	462
Kimberley Ekapa Mining	93 ⁴	125-130	132
Williamson	305 ³	220-230	384 ³

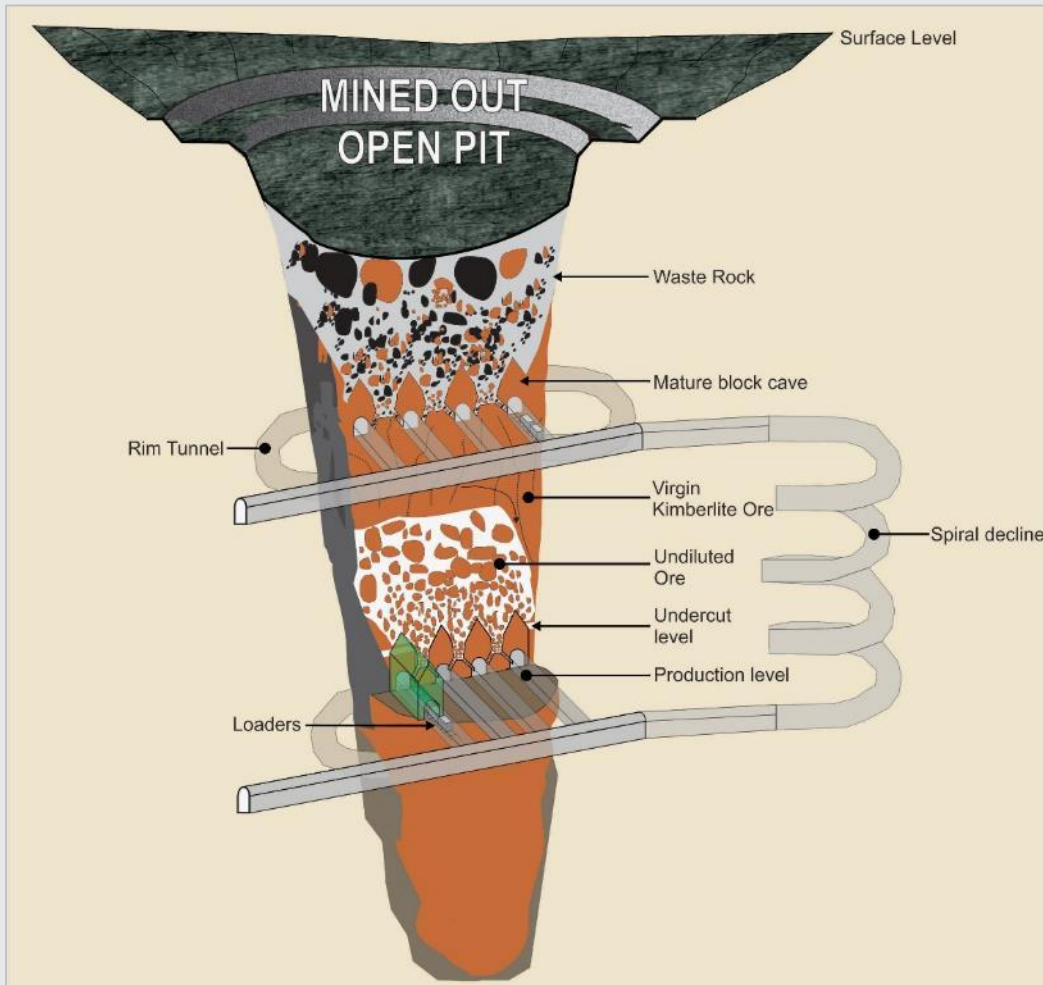
1. Includes sales to Petra's in-house cutting and polishing subsidiary Tarorite (Pty) Ltd, totalling 206.3 carats, valued at US\$0.3 million across the operations; excludes sales by Tarorite totalling 25.0 carats, US\$0.1m.

2. Excludes guidance for exceptional diamonds (stones above \$5 million in value)

3. Average values excluding exceptional stones: Cullinan H1 FY17: \$111/ct; Cullinan FY16: \$109/ct; Williamson H1 FY17: \$253/ct; Williamson FY16: \$238/ct

4. H1 FY 2017 below full year guidance due to parcel make-up weighted towards tailings carats

Moving to Undiluted Ore



- Caving is a safe and proven mechanised mining method; provides access to higher volumes of ore than other methods
- Current underground mining taking place in diluted, mature caves nearing end of lives
- Expansion programmes to take next 'cut' by deepening and establishing new block/sub level caves in undiluted kimberlite
- ROM grades expected to rise significantly, increasing margin per tonne mined:

Finsch +25%: ca. 44 cpht to ca. 55 cpht¹

Cullinan +79%: ca. 28 cpht to ca. 50 cpht¹

- Will reduce wear and tear on processing systems (waste rock is harder and more abrasive than kimberlite)

¹ Management expectations

Finsch – Development Programme

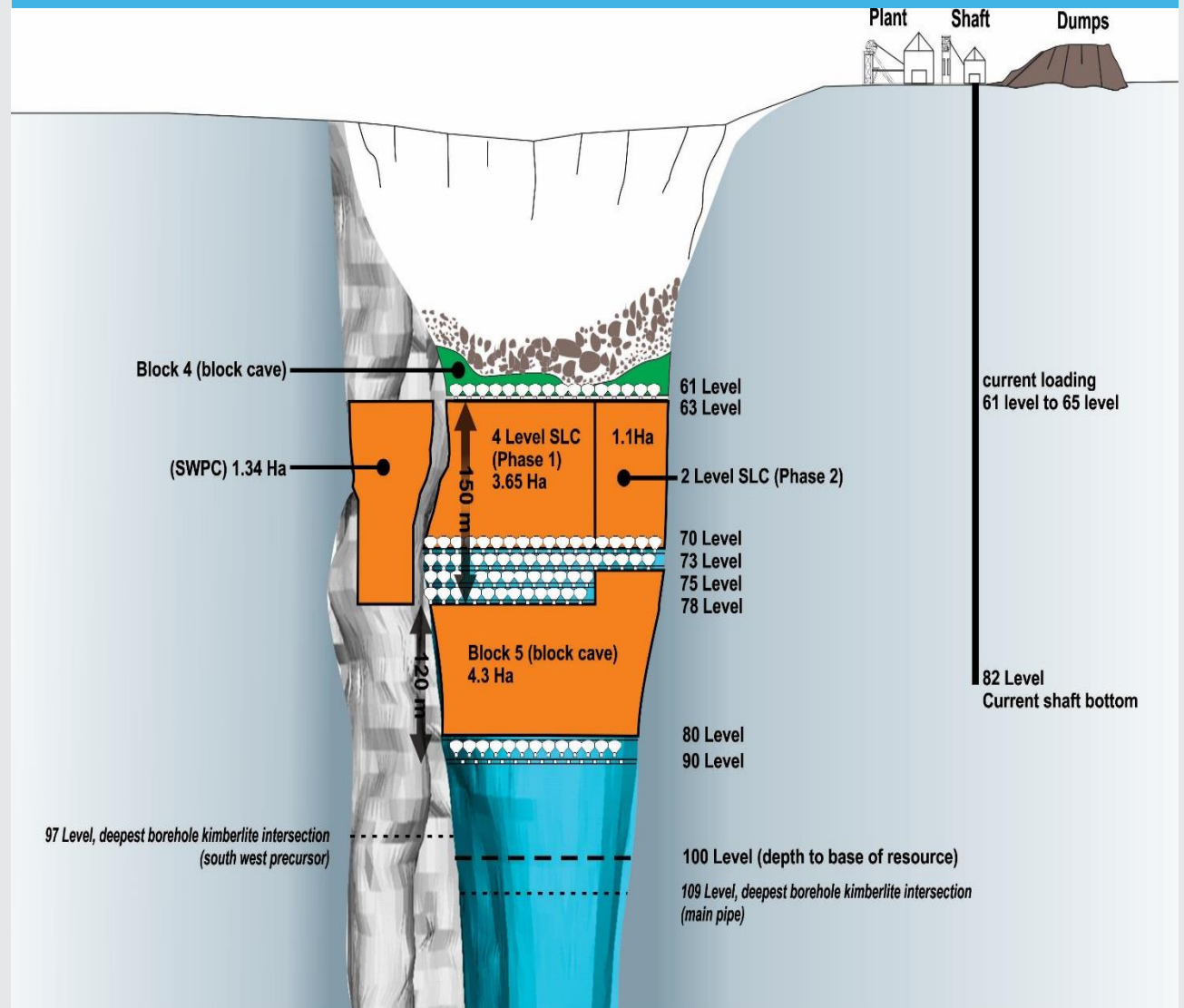
Expansion Plan

- **Expansion plan to take production to ca. 2.0 Mctpa (ROM) by FY 2018**
- Sub level cave
 - tunnelling in host rock complete
 - 6/11 tunnels in production – 1st level
- New Block 5 Block Cave to be installed at 900m

Key Future Milestones

- Production from SLC – **from H2 FY 2016**
- Dedicated ore-handling infrastructure (to transfer SLC ore to existing infrastructure at 650m) – **end FY 2016**
- Mining of South West Precursor from 630m to 780m – **H1 FY 2017**
- Decommissioning of Block 4 automated ore-handling system – **end FY 2017**
- Pre 79 Tailings treated – **end FY 2017**
- Steady state ROM production – **FY 2018**
- Mining of overburden dumps – **continue to FY 2019/FY 2020**
- Block 5 Block Cave at 900m – **FY 2024**

FY 2016 Development: Waste: 2,484 metres; Raiseboring: 99 metres; Kimberlite: 2,969 metres



Cullinan – Development Programme

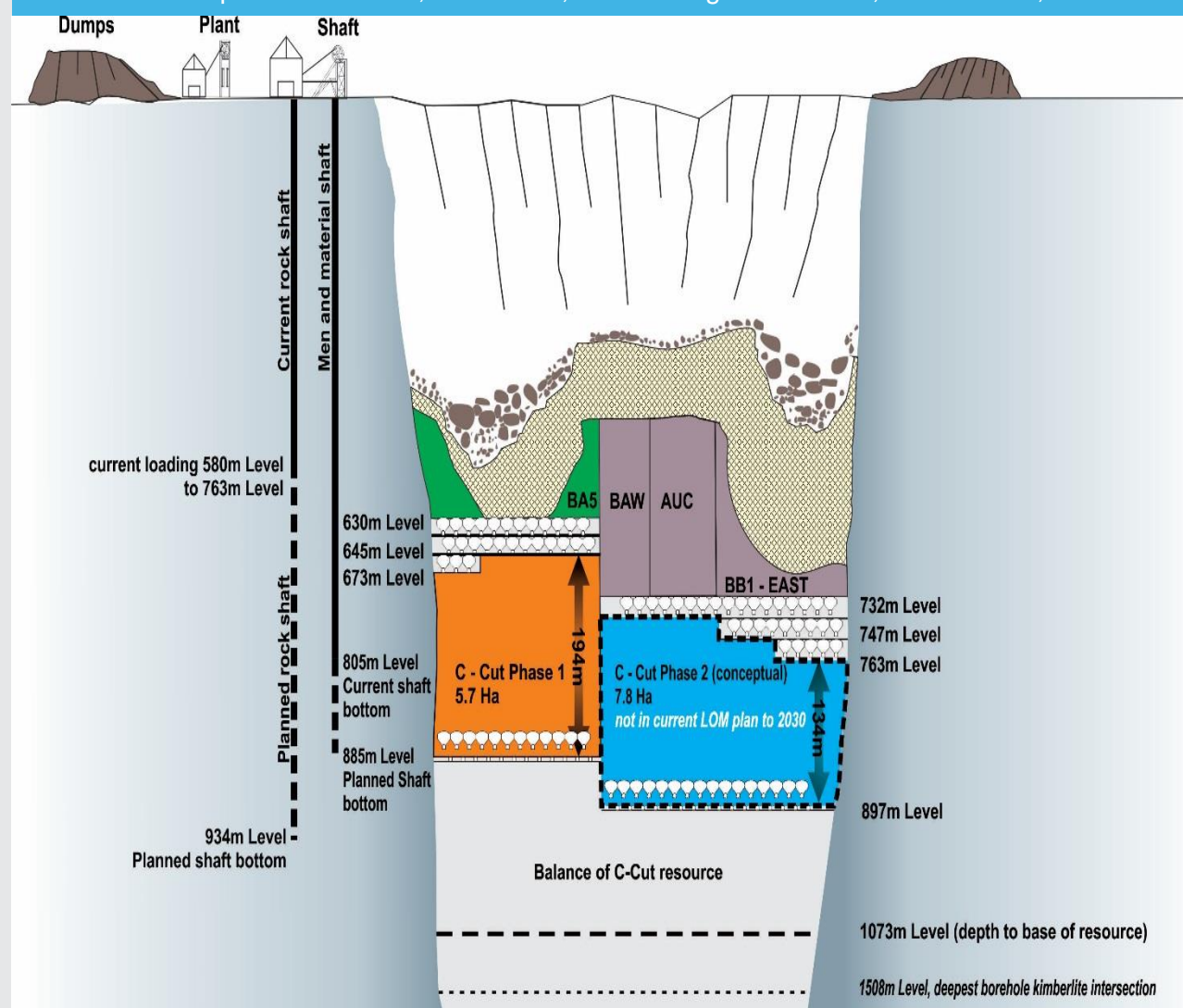
Expansion Plan

- **Expansion plan to take production to ca. 2.2 Mcts by FY 2019 (2.0 ROM & 0.2 tailings)**
- C-Cut Phase 1: new block cave being established on the western side of the orebody
- Development work transitioning from waste tunnelling in host rock to kimberlite
- First rings in the undercut blasted – **June 2015**

Key Future Milestones

- New production levels established at 839m and shaft to 930m commissioned – **FY 2016**
- 880m ore-handling system, allowing for future ramp-ups to utilise full C-Cut footprint – **FY 2016**
- Initial production from new C-Cut cave – **H2 FY 2016**
- Ore shaft completed and commissioned – **H1 FY 2017**
- New Cullinan plant operational – **end FY 2017**
- Steady state ROM production (4Mtpa) – **FY 2019**

FY 2016 Development: Waste: 1,911 metres; Raiseboring: 838 metres; Kimberlite: 2,837 metres



Sustainability



Health and Safety

- Achievements: Improving LTIFR (0.25 for H1 FY 2017); Finsch won two MineSAFE Awards
- Challenges: Petra's mining method and operations are inherently safe but there is an ever present risk of accidents
- Intensification of safety initiatives and new control procedures put in place as a result of the fatalities experienced in H1 FY 2017; renewed focus on safety; Petra striving for zero harm

Stable Employee Labour Relations

- FY 2017 is last year of 3 year wage agreement
- Restructure of Group BEE holdings – Itumeleng Petra Diamonds Employee Trust (IPDET) now holds 12% in each SA operation

Training and Development

- \$5.8m spent on training & development programmes in FY 2016

Environment – continued focus on efficiencies

- All expansion programmes designed for improvements in energy, water and carbon emitted per tonne
- Petra shortlisted by Carbon Disclosure Project for 'Best year on year change in performance' for FTSE 350 companies'



Cullinan hosts a careers day for local students



Annual CEO Tour of Operations – presentation on Petra's strategic direction and opportunity for employees to have direct access and Q&A

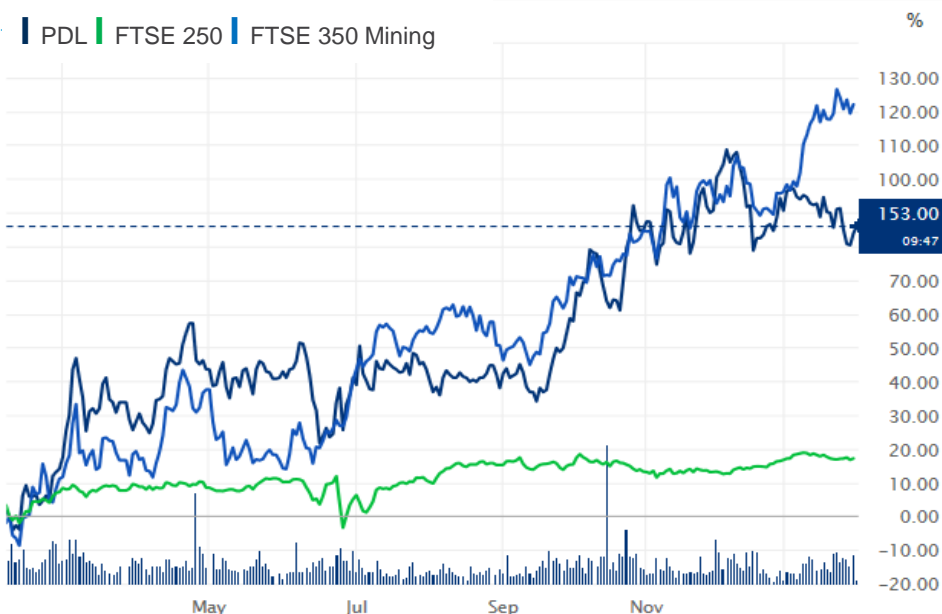


Appendix



Capital Structure

Share Price (1 year to 1 Feb 2017) vs FTSE 250 & FTSE 350 Mining



As at 1 February 2017

	Number of voting rights	% ISC
BlackRock, Inc.	85,628,014	16.2%
T. Rowe Price	57,956,911	10.9%
Standard Life Investments	39,638,469	7.5%
Templeton Global Advisors	15,920,470	3.0%
Directors	21,062,590	4.0%

Listing

Average daily trading volume (shares) – (LTM)

Shares in issue

Free float

Market cap @ 153p (1 Feb 2017)

LSE: PDL

3m

530.1m

88.61%

£810m / \$1,000m

The Petra Board & Senior Management



PetraDiamonds



Adonis Pouroulis
Non-Executive Chairman

Successful mining entrepreneur
Founded Petra Diamonds in 1997 and floated first diamond company on AIM
Along with fellow directors, built Petra into pan-African diamond group with over 5,000 employees
Instrumental in raising funds to help finance and structure early stage mining companies in Africa



Johan Dippenaar
CEO

One of South Africa's most successful diamond entrepreneurs with 25 years' experience
Founded diamond group in 1990 and grew portfolio to three producing mines before listing as Crown Diamonds on ASX
Merger with Petra in 2005 – now at helm of London's largest listed diamond company



Jim Davidson
Technical Director

Acknowledged world authority on kimberlite geology and exploration
+20 years' experience in diamond mine management
Formerly Head of Diamond Exploration for Rio Tinto across Southern Africa
As Technical Director of Crown Diamonds, managed specialist underground fissure mines over a decade

Jacques Breytenbach
Chief Financial Officer

Assumed role in June 2016, having held position of Finance Manager – Operations at Petra since 2006
Leads financial management of Petra and is responsible for financing, treasury, financial controls, reporting, legal, investor relations, compliance and corporate governance

Koos Visser
Chief Operating Officer

Assumed role in June 2016, having been Group Operations Manager at Petra since 2005
Previous broad industry experience includes Utilities and Technical Services Manager at Impala Platinum



Tony Lowrie
Senior Independent Non-Executive Director

Over 35 years' association with the equities business and an experienced NED
Formerly Chairman of ABN AMRO Asia Securities & MD of ABN AMRO Bank. Has previously been a NED of Allied Gold Plc (prior to its merger with St Barbara Limited), Dragon Oil plc, Kenmare Resources, J. D. Wetherspoon plc and several quoted Asian closed end funds
Currently a Director of the Edinburgh Dragon Fund



Dr Patrick Bartlett
Independent Non-Executive Director

Acknowledged expert on kimberlite geology and design and geotechnical aspects of block caving
Formerly Chief Geologist for De Beers; responsible for all kimberlite mines in South Africa
In-depth knowledge of several Petra mines, having worked at Finsch, Koffiefontein, Kimberley Underground, plus was geologist at Cullinan between 1983 to 2003
Since retiring has been involved in block caving projects for BHP, Anglo and Rio Tinto



Gordon Hamilton
Independent Non-Executive Director

Extensive experience as a NED across wide range of businesses, both JSE and LSE listed; chairs Audit Committee for all these companies
Formerly a partner for +30 years at Deloitte & Touche LLP; primarily responsible for multinational and FTSE 100 listed company audits, mainly in mining, oil & gas, and aerospace and defence; headed up Deloitte South Africa desk in London
Served for 9 years as member of the UK Financial Reporting Review Panel



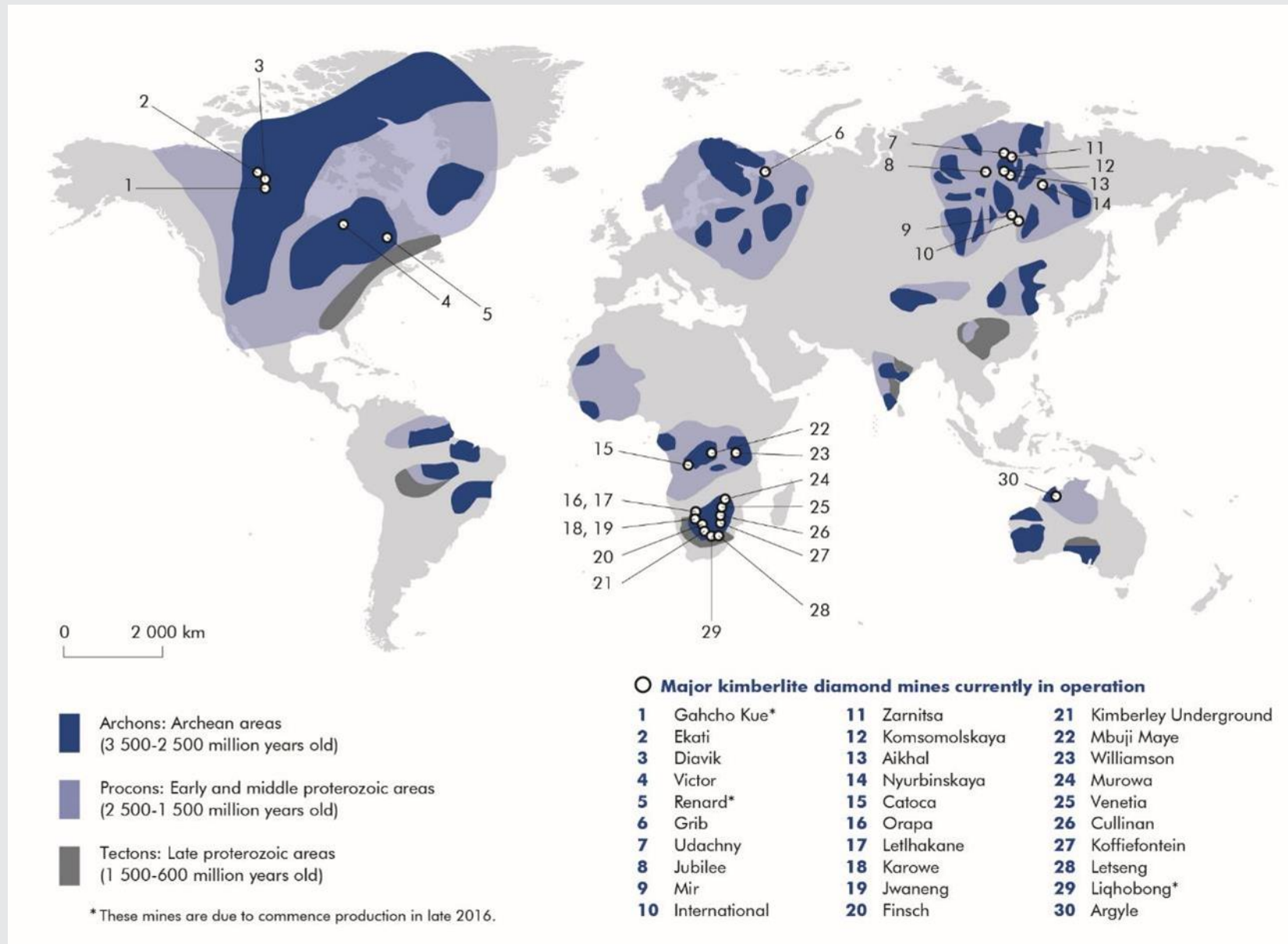
Octavia Matloa
Independent Non-Executive Director

A chartered accountant with broad business, financial and auditing experience
Member of the Audit Committee
Completed articles with PwC in South Africa in 2000 before joining the Department of Public Transport, Roads and Works, first as deputy chief financial officer, followed by chief director management accountant
An entrepreneur who has founded a number of businesses

World Diamond Mines



PetraDiamonds



An Exceptional Growth Plan

July 2007

Koffiefontein



70% Petra¹; 30% BEE

Sub-level / Block Cave
Mine Plan to 2025
+20yr Potential Life

July 2008

Cullinan



74%¹ Petra; 26% BEE

Block Cave
Mine Plan to 2030
+50yr Potential Life

February 2009

Williamson



75% Petra¹; 25%
Government of Tanzania

Open Pit
Mine Plan to 2033
+50yr Potential Life

Petra has acquired six non-core diamond mining operations from De Beers

Petra approach:

- Flat management structures
- Focus on efficiencies / cost control
- Focus on value as opposed to volume production
- Utilise in-house expertise / knowledge
- Phased approach to development (lower capital intensity)
- Make decisions, get going

May 2010

Kimberley UG



74% Petra¹; 26% BEE

Block Cave
Mine Plan to 2026
+13yr Potential Life

September 2011

Finsch



74% Petra¹; 26% BEE

Sub-level / Block Cave
Mine Plan to 2030
+25yr Potential Life

January 2016

Kimberley Mines



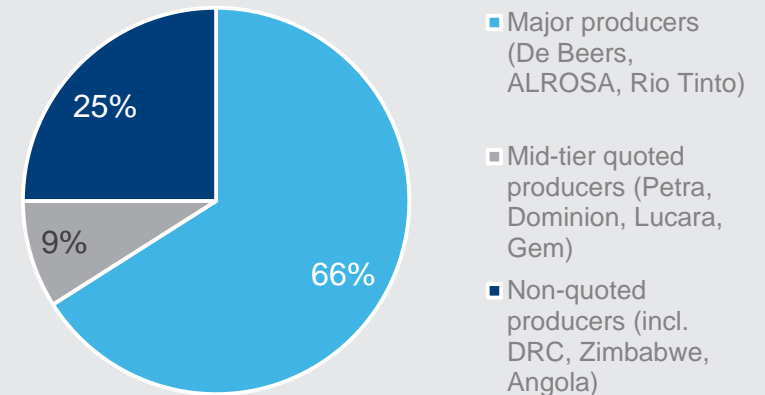
49.9% Petra; 50.1%
Ekapa

Tailings Operations
Mine Plan to 2019
+20yr Potential Life

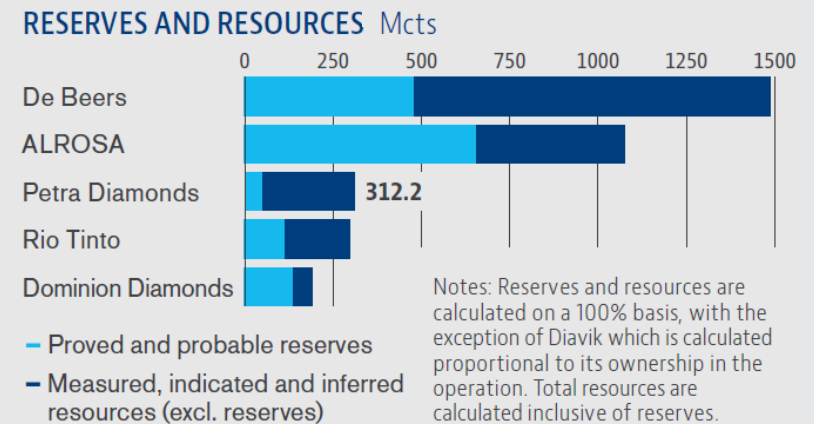
1. Refer to 'FY 2017 Analyst Guidance – Explanatory Notes', section 'Effective Interest in Mines' at <https://www.petradiamonds.com/investors/analysts/analyst-guidance> for further disclosures re. Petra's effective interest in its mines

Petra's Place in the Market: One of the World's Largest Diamond Resources

- Based on FY 2016 production, Petra accounted for:
 - 2.9% of world supply by volume
 - 3.1% by value
- World-class resource of **312.2 Mcts**, ranking 3rd by size
- Long potential mine lives, in particular Cullinan and Williamson: potential for 50+ yrs
- Major diamond producers:
 - De Beers (Anglo American)
 - Alrosa
 - Rio Tinto
- Mid-tier peer group:
 - Petra Diamonds
 - Dominion Diamond
 - Lucara Diamond
 - Gem Diamonds



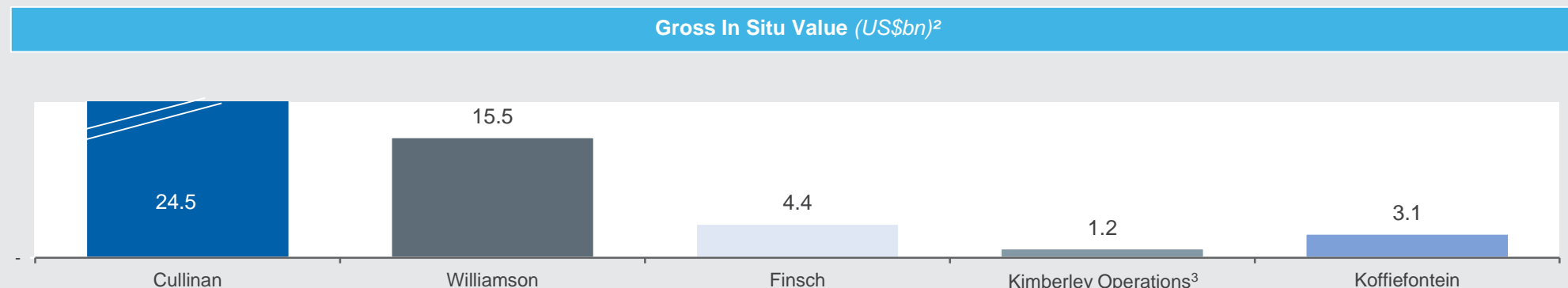
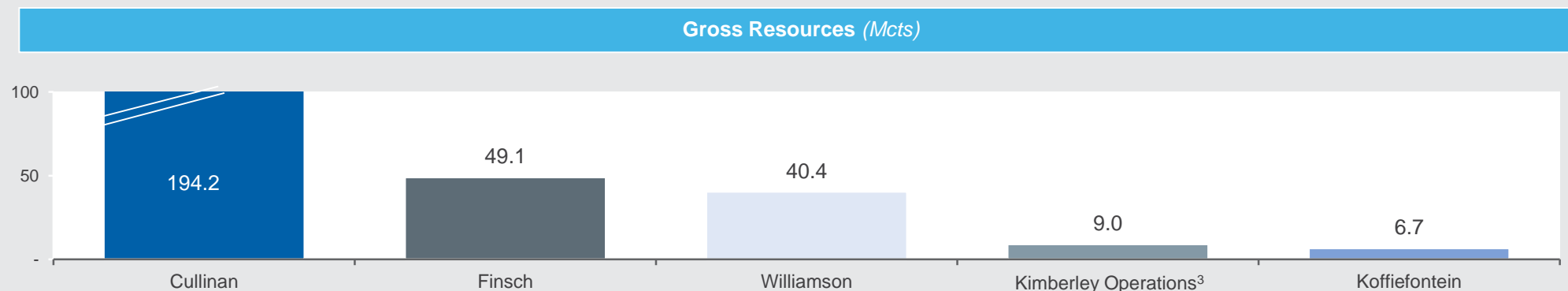
World Diamond Production by Value



Reserves and Resources (Mcts)

2016 Resource Statement (30 June 2016)

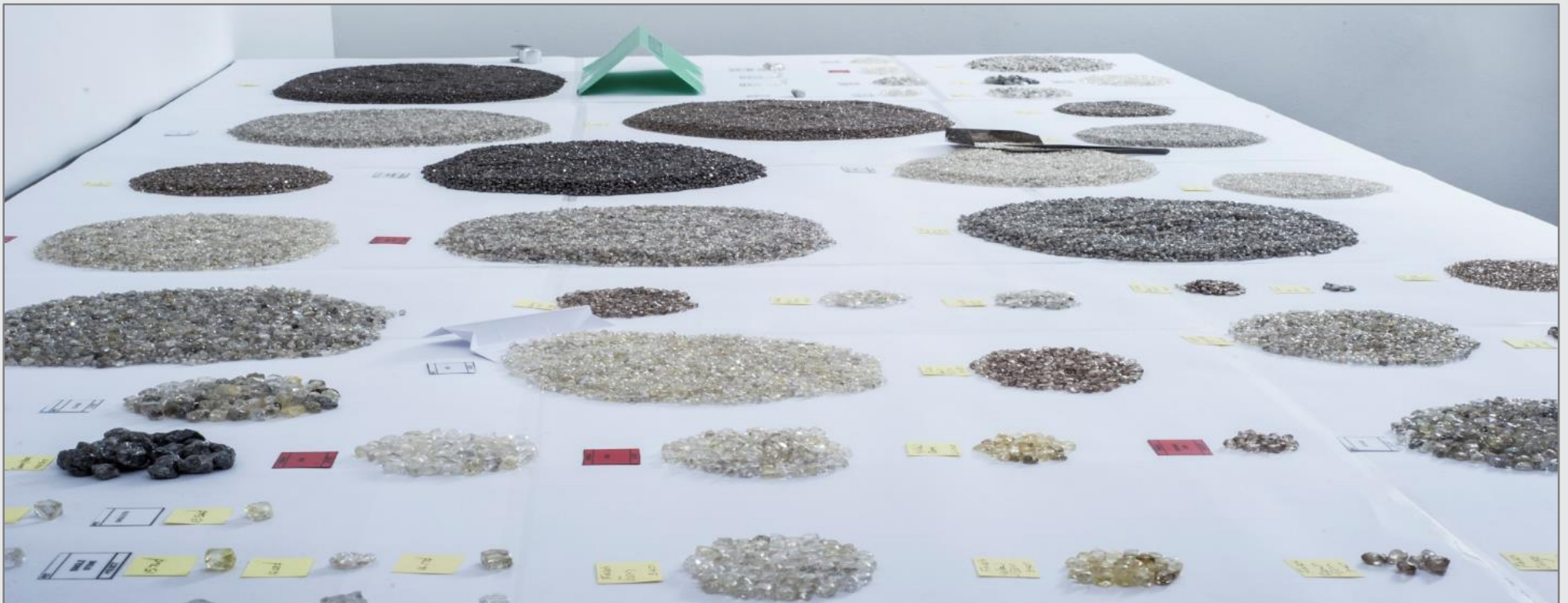
World-class Resource base of 312.2 million carats¹ worth ca. US\$48.6 billion²



1. The total Group Resource includes 4.1 Mcts for the Helam mine in South Africa (now on care and maintenance) and 8.7 Mcts for the KX36 exploration project in Botswana
2. The estimated Resource value uses FY 2016 average carat values to calculate the in situ values of the Cullinan, Finsch, Williamson, Koffiefontein and Kimberley Operations; the values for Helam and KX36 have not been included in this estimate value
3. Reflects Petra's effective interest at 30 June 2016, being 100% of KUM's resources, and 49.9% of Kimberley Mines Resources

Petra Production Profile

- Production profile of a kimberlite is highly consistent when the mine is in steady state production
- Ever growing volumes across the full diamond spectrum (from lowest to highest value)
- Growing trend for mass luxury supported by strong pricing performance in smaller / 2nd to 3rd quality goods



Exceptional Diamonds

- Petra classifies 'exceptional diamonds' as stones that sell for +\$5 million each
- Exceptional diamonds contributed on average \$23 million pa from FY 2009 to FY 2016
- Average increased to ca. \$36 million pa in FY 2014 to FY 2016
- First tender of FY 2017 included sale of a 138.57 carat white stone from Cullinan which sold for US\$6.5 million, and a 10.64 carat pink stone from Williamson which sold for US\$5.2 million.

Exceptional Diamond Sales – FY 2016

Williamson

23 carat Williamson pink sold for \$10 million in December 2015



32 carat Williamson pink sold for \$15 million in March 2016



Cullinan

Petra's 15% share in sale of 24 carat Cullinan Dream was \$5 million in June 2016



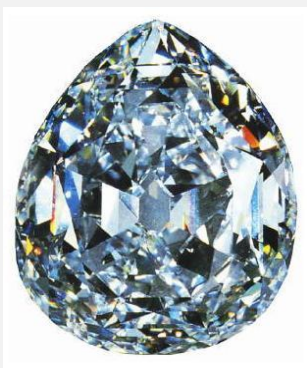
121 carat Cullinan white sold for \$6 million in June 2016



Iconic Diamonds From Iconic Mines



PetraDiamonds



The Greater Star of Africa
Largest polished yield
from the Cullinan at
530ct; sits in the Royal
Sceptre
Cullinan, 1905



The Cullinan Heritage
507.5 carats rough
Cullinan, 2009

The Williamson Pink
55ct rough; 24ct polished;
gifted to Princess Elizabeth
on her engagement
Williamson, 1947



The Golden Jubilee
755.5ct rough,
545.6ct polished
Cullinan, 1986



The Cullinan
3,106 carats rough
Largest gem diamond ever discovered
Cullinan, 1905

The Oppenheimer
253.7ct rough
Perfect yellow diamond
*Dutoitspan Mine,
Kimberley U/G, 1964*



The Star of Josephine
26.6ct rough,
7.0ct polished
Cullinan, 2009



The Blue Moon
29.6ct rough, 12.0ct polished
Cullinan, 2014

The Taylor Burton
240.8ct rough,
69.4ct polished
Cullinan, 1966



The Most Highly Concentrated Form of Wealth

Examples of recent polished diamond sales at auction



**The 14.62ct
Oppenheimer
Blue diamond**

Sold for \$57.7m
\$3.9m per carat,
18 May 2016



**The 12.03ct Blue
Moon of
Josephine
diamond**

Sold for \$48.4m
\$4.0m per carat,
12 November 2015



**The 24.18ct
Cullinan Dream
diamond**

Sold for \$25.4m
\$1.1m per carat,
9 June 2016



**The 15.38ct
Unique Pink
diamond**

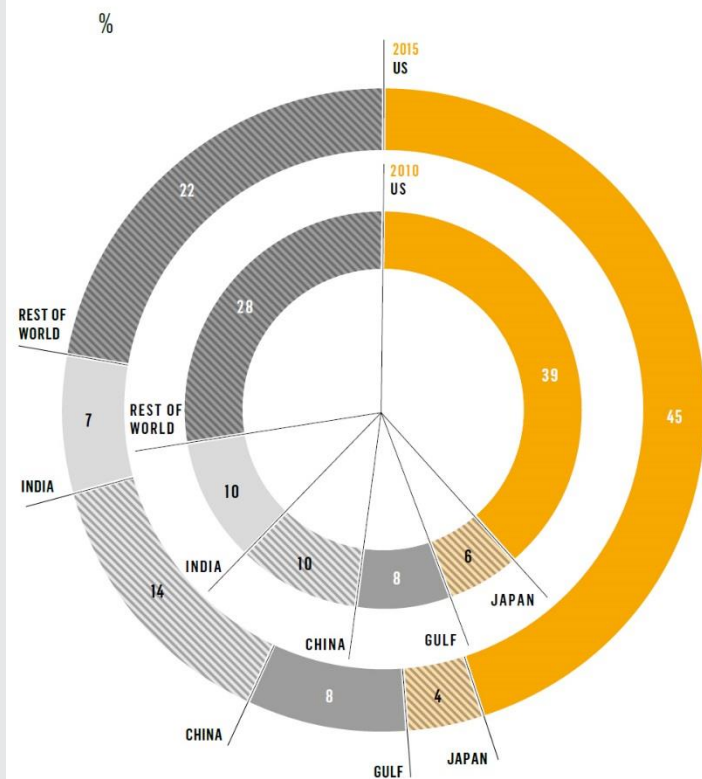
Sold for \$31.6m
\$2.1 per carat,
17 May 2016

The Diamond Market in 2015

- Global diamond jewellery sales +2% in local currency but -2% in USD: ca. \$79 billion

Share of World Polished Diamond Consumption in Value (US\$ PWP)

FIG. 6: SHARE OF POLISHED DIAMOND DEMAND BY VALUE (POLISHED WHOLESALE PRICES IN US\$ TERMS); TOP FIVE GEOGRAPHIES AND REST OF WORLD

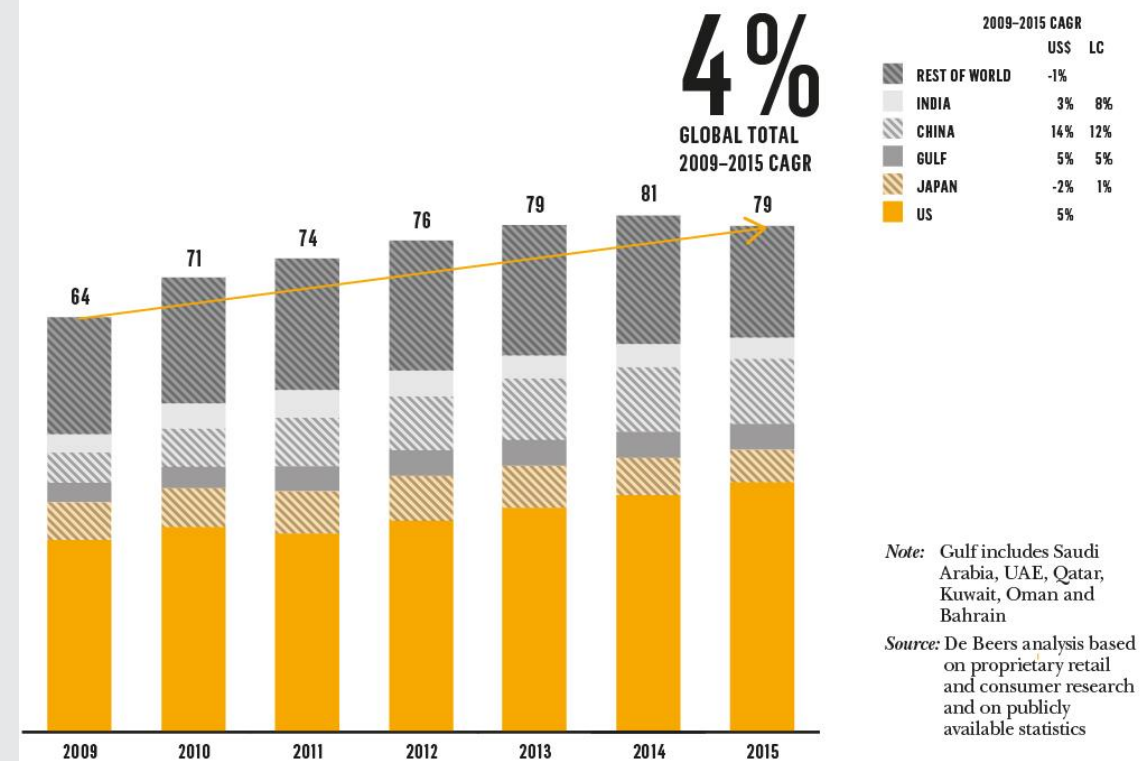


Note: Gulf includes Saudi Arabia, UAE, Qatar, Kuwait, Oman and Bahrain

Source: De Beers analysis based on proprietary retail and consumer research and on publicly available statistics

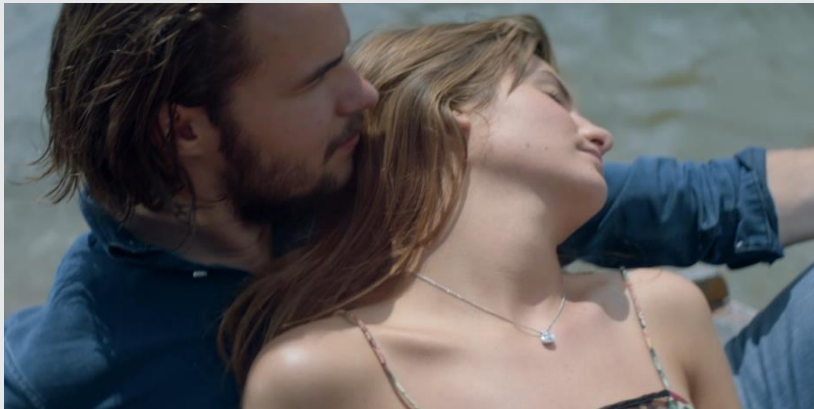
Diamond Jewellery Value, Growth by Geography (US\$bn)

FIG. 4: DIAMOND JEWELLERY VALUE: GLOBAL GROWTH BY MAIN GEOGRAPHY
US\$ BILLION (NOMINAL) AND GROWTH IN %



DPA Advertising Campaign: Wild and Kind

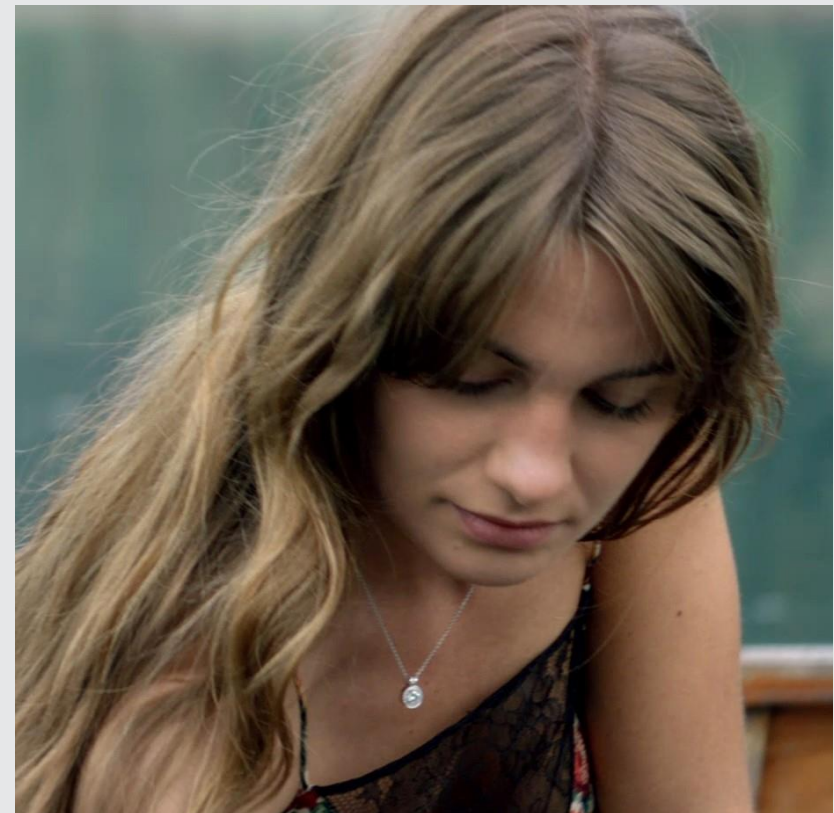
- **Diamond Producers Association** aims to encourage best practice and sustainability across the industry and to protect the integrity of the diamond
- ‘**Real is Rare. Real is a diamond**’ communication platform based on research into US millennial generation mind set and speaks to desire for authentic emotional connections
- **First campaign** launched in October 2016; future campaigns planned to target important new markets such as China and India
- **Petra taking active role** in sustaining consumer demand over the long term as a founder member of DPA



Campaign launched in October 2016

“The opportunity exists for diamonds to represent the rare, precious and real connections that Millennials crave.”

Jean-Marc Lieberherr, DPA CEO



DPA's new generic marketing campaign for diamonds

FY 2016 Operational Results



PetraDiamonds

	Finsch		Cullinan		Koffiefontein		Kimberley Ekapa Mining		Williamson	
	FY 2016	FY 2015	FY 2016	FY 2015	FY 2016	FY 2015	FY 2016	FY 2015	FY 2016	FY 2015
ROM PRODUCTION										
Tonnes Treated (t)	3,547,798	3,016,385	2,302,892	2,513,004	681,344	341,783	721,513	1,196,269	4,003,180	4,056,638
Grade (cpht)	44.3	43.1	28.0	24.4	7.5	8.1	12.3	11.5	5.0	4.8
Diamonds recovered (carats)	1,572,725	1,298,914	643,724	611,993	50,825	27,756	88,572	137,226	199,796	194,048
TOTAL PRODUCTION										
Tonnes treated (t)	5,843,716	5,672,856	3,189,181	4,971,310	1,128,198	866,027	4,305,271	1,196,269	4,420,632	4,426,044
Diamonds recovered (carats)	2,214,064	2,065,875	680,813	729,496	62,190	45,384	531,469	137,226	212,869	202,265
SALES										
Diamonds sold (carats)	2,085,123	2,067,933	663,175	700,896	55,500	46,033	438,680	138,052	205,548	208,351
Average price per carat (US\$)	89	90	126 ¹	174 ²	462	386	132	302	384	298
Revenue (US\$M)	186.4	185.4	83.3	122.2	25.7	17.8	57.7	41.8	78.9	62.1
ON-MINE CASH COST PER TONNE TREATED	R183	R164	R257	R154	R317	R303	R140	R264	US\$11	US\$12
TOTAL CAPEX	73.8	88.0	179.4	121.5	27.5	26.8	16.8	13.9	24.4	16.2

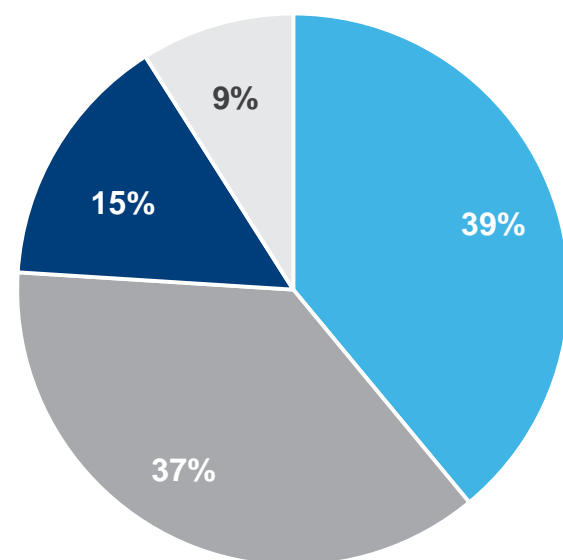
1. Excluding exceptional diamonds, the average value for FY 2016 was US\$109 per carat

2. Excluding exceptional diamonds, the average value for FY 2015 was US\$119 per carat

FY 2016 - Operating Costs

Petra's focus on cost control and the weaker ZAR helped to mitigate inflationary pressures

FY 2016 On-mine cash cost breakdown
(South Africa operations)



- Labour
- Contractors, consumables and stores
- Power
- Other

Group on-mine US\$ cash costs decreased 3% due to:

- Increase in tonnes treated (7% increase)
- Inflationary increases, including the impact of electricity and labour costs (7% increase)
- Offset by positive translation of the South African operations' ZAR costs at weaker ZAR:USD rate (17% decrease)

Finsch Development Snapshot



Long hole drilling, 70 Level SLC kimberlite



Tipping blasted ore through rockbreaker



Access development tunnel



UG conveyor used to transport broken ore



Installation of the Apron Feeder Bulkhead



The new bulk sample plant

Cullinan Development Snapshot



Rock breaker south extraction



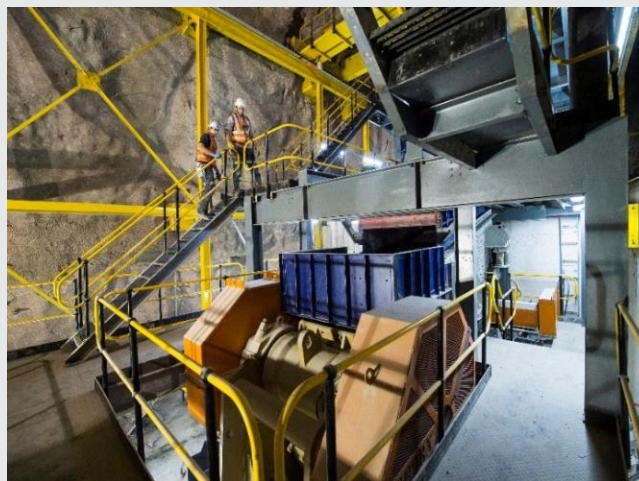
Long hole drilling draw point



North production conveyor 2



Conveyor Planning



Crusher installation



Silo loading Box

Cullinan Mill Plant Project



Run of Mine Silo & Recycle Silo



Main Sub Station



Recovery & HPGR & XRL Buildings



Mill plant, mill basis and DMS feed area



Jaw Crusher installation

- Increase in diamond liberation and gentler process likely to result in less breakage
- Saving of ca. ZAR20 – 25/t in processing costs
- Strong standalone economics
 - Payback of ca. 3 years
 - IRR of 25%
- New plant expected to be fully operational by end FY 2017

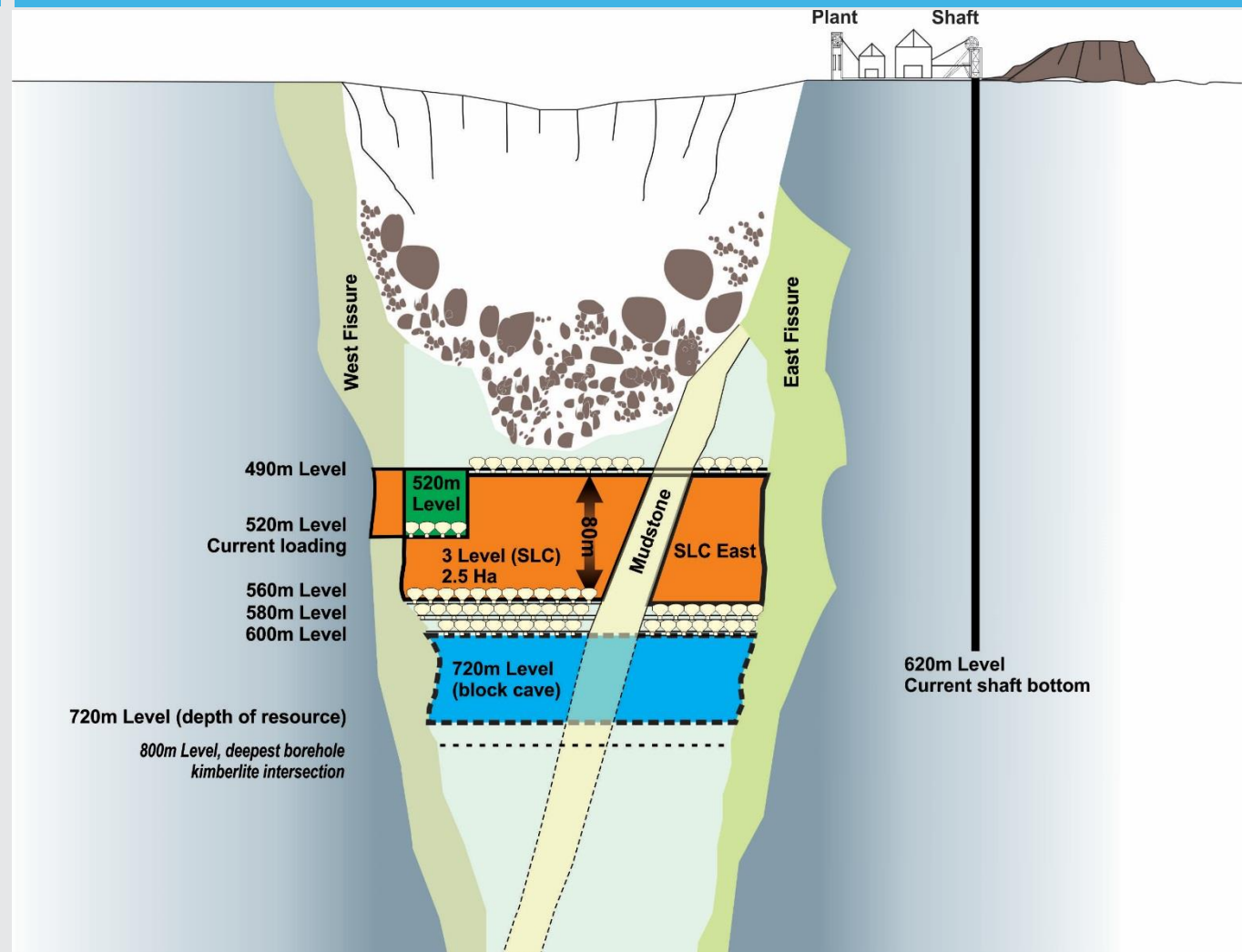
Koffiefontein – Development Programme

Expansion Plan

Expansion Plan – to take production to ca. 95,000 ctpa by FY 2017

- SLC to be mined over 3 levels from 560 mL to 600 mL
- Production commenced from first tunnels of SLC on 560 mL – **end FY 2015**
- 52L Western Fissure came into production to supplement ore from SLC Phase 1 on 56L – **FY 2016**
- Ramp up ROM production to 1.1 Mt – **FY 2017**

Koffiefontein Kimberlite Pipe Schematic



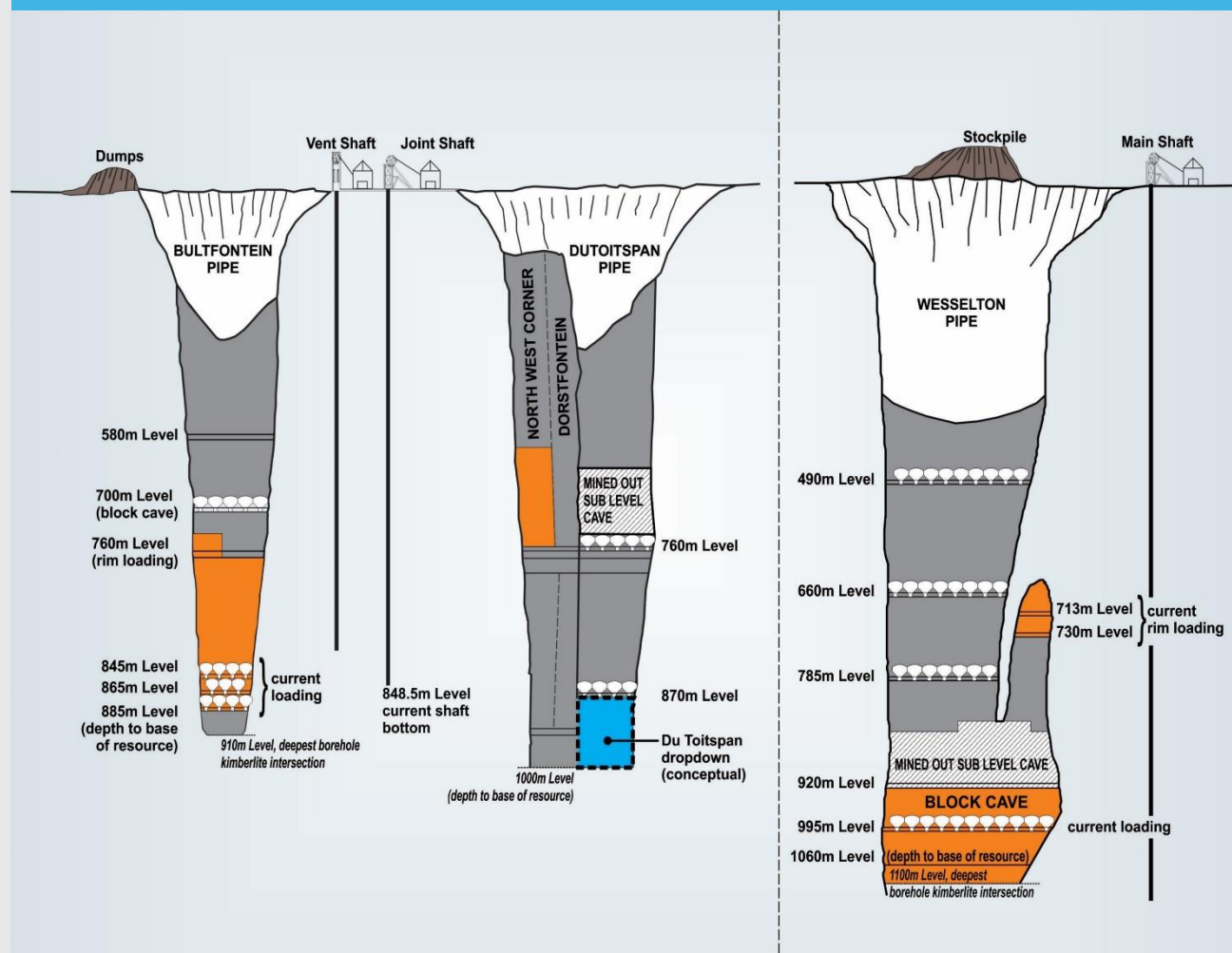
Kimberley Underground – Development Programme

Expansion Plan

Expansion Plan – planned underground production of ca. 215,000 ctpa from FY 2019

- Underground ore to be treated at Central Treatment Plant – **from FY 2017**
- Planned grade of 13 – 14 cpht – **from FY 2018**
- ROM tonnes ramping up from 1.2 Mt planned in FY 2016 to ca. 1.6 Mtpa – **from FY 2019**
- Underground development at Wesselton and Dutoitspan to extend mine life

Kimberley Underground Kimberlite Pipes Schematic



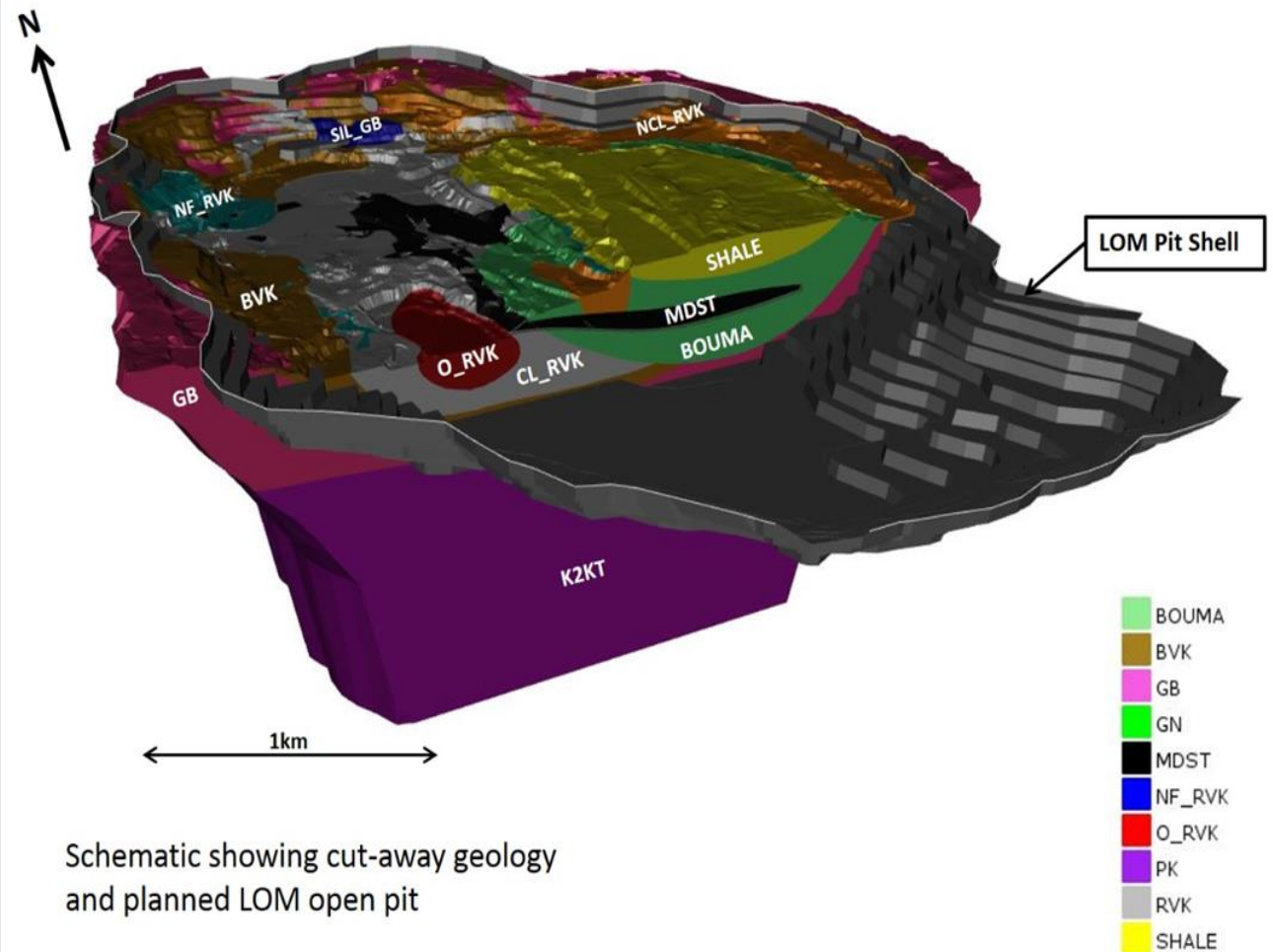
Williamson – Development Programme

Expansion Plan

Expansion Plan – to take production to ca. 325,000 ctpa by FY 2018

- Plant modifications (additional crusher circuit, 2 autogenous mills) commenced – **FY 2016**
- Commissioning of crusher – **FY 2016**
- Commissioning of autogenous mills – **H1 FY 2017**
- ROM throughput planned at 4.6 Mt – **FY 2017**
- Ramp up of ROM throughput to ca. 5 Mtpa (at ca. 6.5 – 7 cpht) by **FY 2018**

Williamson Kimberlite Pipe Schematic



Debt Facilities

- Bank facilities (excl. FX lines) as at 31 Dec 2016: ca. \$268 million
- Bank debt facilities undrawn and available to the Group as at 31 Dec 2016: \$57 million
- Debt includes US\$300 million senior secured second lien notes issued May 2015

Lender	Type	Size ZARM	Size US\$M ¹	Utilised at 31 Dec 2016 ZARM/US\$M	Interest Rate	Repayment
Absa & Nedbank	ZAR Amortising term facility	900	66	ZAR900M	3M JIBAR + 3.5%	3 semi-annual payments from Mar 2018
IFC	USD Amortising term facility	-	35	US\$35.0M	3M LIBOR + 4.0%	3 semi-annual payments from Mar 2018
Absa & Nedbank	ZAR Revolving credit facility	1,250	91	ZAR1,250M	1M JIBAR + 5.0%	Repayable Dec 2019
IFC	USD Revolving credit facility	-	25	US\$18.8M	1M LIBOR + 5.5%	Repayable Dec 2019
Absa & RMB (FNB)	ZAR Working capital facility	700	51	nil	SA Prime – 1.0%	Subject to annual renewal
Bond holders	Second lien secured bond notes	-	300	US\$300M	8.25%	May 2020

1. US\$m equivalent, exchange rate US\$1:ZAR13.73

Bank Debt Facilities – Covenants

	Maintenance Covenants					Distribution Covenants
Covenant	12 months to 30 June 2016	12 months to 30 June 2016	12 months to 31 Dec 2016	12 months to 30 June 2017	12 months to 31 Dec 2017 and thereafter	All periods
	Actual	Required ratio	Required ratio	Required ratio	Required ratio	Required ratio
Net Debt ¹ to EBITDA	2.8x	≤3.1x (Revised from ≤2.5x)	≤2.8x (Revised from ≤2.5x)	≤2.5x	≤2.5x	≤2.0x
EBITDA to net finance charges	4.3x	≥3.7x (Revised from ≥4.0x)	≥3.85x (Revised from ≥4.0x)	≥4.0x	≥4.0x	≥6.0x
Net Debt ¹ to Book Equity	0.5x	≤0.6x (Revised from ≤0.75x)	≤0.6x (Revised from ≤0.5x)	≤0.6x (Revised from ≤0.5x)	≤0.5x	≤0.3x

1. Net Debt is Consolidated Debt per published results, plus the guarantee for the BEE Partners loan facilities of ZAR1,303 million as at 30 June 2016 (30 June 2015: ZAR1,163 million)

Leverage Ratios

		30 June 2016	30 June 2015
IFRS Net debt ¹	USDm	375.8	160.5
Consolidated net debt (for bank debt covenant measurement)	USDm	464.6	256.1
Gearing ²	%	69	26
Adjusted EBITDA ³	USDm	164.3	139.3
EBITDA margin ⁴	%	39	33
Consolidated net debt: EBITDA ⁵	x	2.8	1.8
EBITDA net interest cover ⁶	x	4.3	7.3
Adjusted operating cashflow ⁷	USDm	192.0	141.3

1. Net debt is the US\$ loan notes and bank loans and borrowings net of cash at bank
2. Gearing is calculated as net debt divided by total equity
3. Adjusted EBITDA, stated before depreciation, share-based expense, net finance expense, tax expense, impairment charges, net unrealised foreign exchange gains and losses and loss on discontinued operations
4. EBITDA margin is Adjusted EBITDA divided by revenue
5. Consolidated net debt: EBITDA is Consolidated net debt divided by Adjusted EBITDA
6. EBITDA: net interest cover is EBITDA divided by net finance costs, exchange gains or losses and unwinding of present value adjustment for rehabilitation costs
7. Adjusted operating cashflow, is operating cash flow adjusted for the cash effect of the movement in diamond debtors between each financial year end, excluding unrealised foreign exchange translation movements

Capex Profile – FY 2017 to FY 2019



PetraDiamonds

Financial Year		2017	2018	2019
Operation				
Finsch	ROM tonnes treated (Mt)	3.6	3.8	3.8
	Tailings tonnes treated (Mt)	1.3	-	-
	Expansion Capex (ZARm)	692	428	225
	Sustaining Capex (ZARm)	116	105	97
Cullinan	ROM tonnes treated (Mt)	2.8	3.6	4.0
	Tailings tonnes treated (Mt)	0.3	2.4	2.4
	Expansion Capex (ZARm)	1366	376	124
	Sustaining Capex (ZARm)	82	89	92
Koffiefontein	ROM tonnes treated (Mt)	1.1	1.1	1.1
	Expansion Capex (ZARm)	152	89	43
	Sustaining Capex (ZARm)	29	35	35
KEM JV (100% terms)	ROM tonnes treated (Mt)	1.2	1.4	1.6
	Tailings tonnes treated (Mt)	8.6	8.4	7.2
	Expansion Capex (ZARm)	419	493	381
	Sustaining Capex (ZARm)	76	84	77
PETRA (SA Operations)	Expansion Capex (ZARm)	2629	1386	774
	Sustaining Capex (ZARm)	303	313	301
Williamson	ROM tonnes treated (Mt)	4.6	5.0	5.0
	Alluvial tonnes treated (Mt)	0.4	-	-
	Expansion Capex (USDm)	5	5	4
	Sustaining Capex (USDm)	3	4	4
PETRA (All Operations)	ROM tonnes treated (Mt)	13.3	14.9	15.5
	Tailings / other tonnes treated (Mt)	10.7	10.8	9.6
	Expansion Capex (USDm)	193	104	59
	Sustaining Capex (USDm)	25	26	25

1. All Capex numbers are stated in FY 2017 money terms (ZAR14:\$1 where applicable)
2. Depreciation on mining assets for FY 2017 guided at ca. US\$70 – 75 million at ZAR14:\$1
3. As in prior guidance, capital estimates above do not include any capitalised borrowing costs; guidance is to assume majority of borrowing costs are to be capitalised
4. Finsch: Block 5 Block Cave expansion capital (post FY 2019) is guided at ca. \$25-30 million (FY 2017 money terms), to be incurred over the five year period FY 2020 to FY 2024



Thank You

Further enquiries:

Investor Relations

investorrelations@petradiamonds.com

+44 20 7494 8203

www.petradiamonds.com

